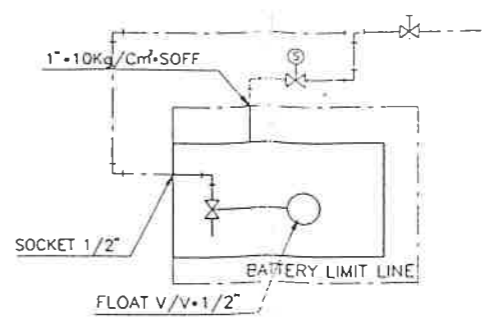
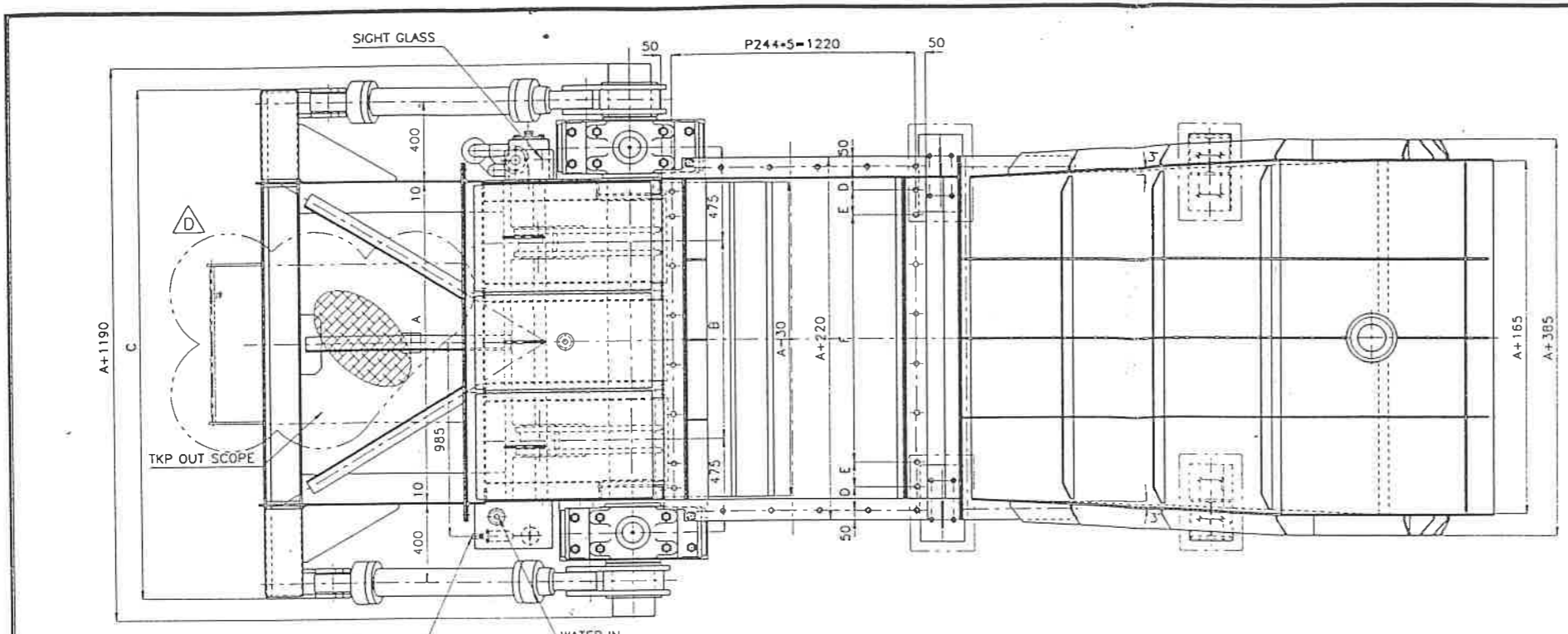
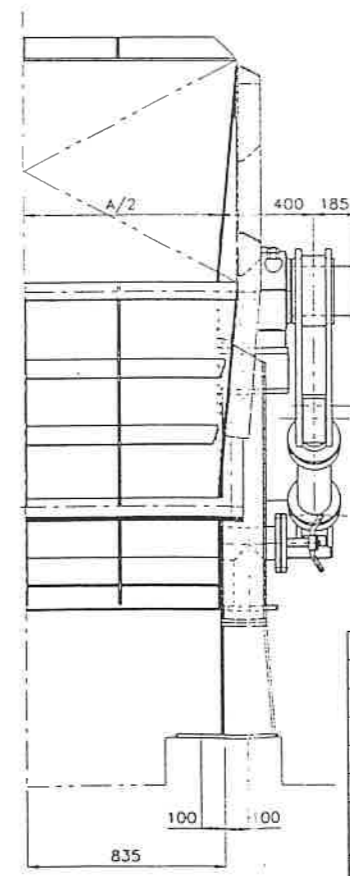
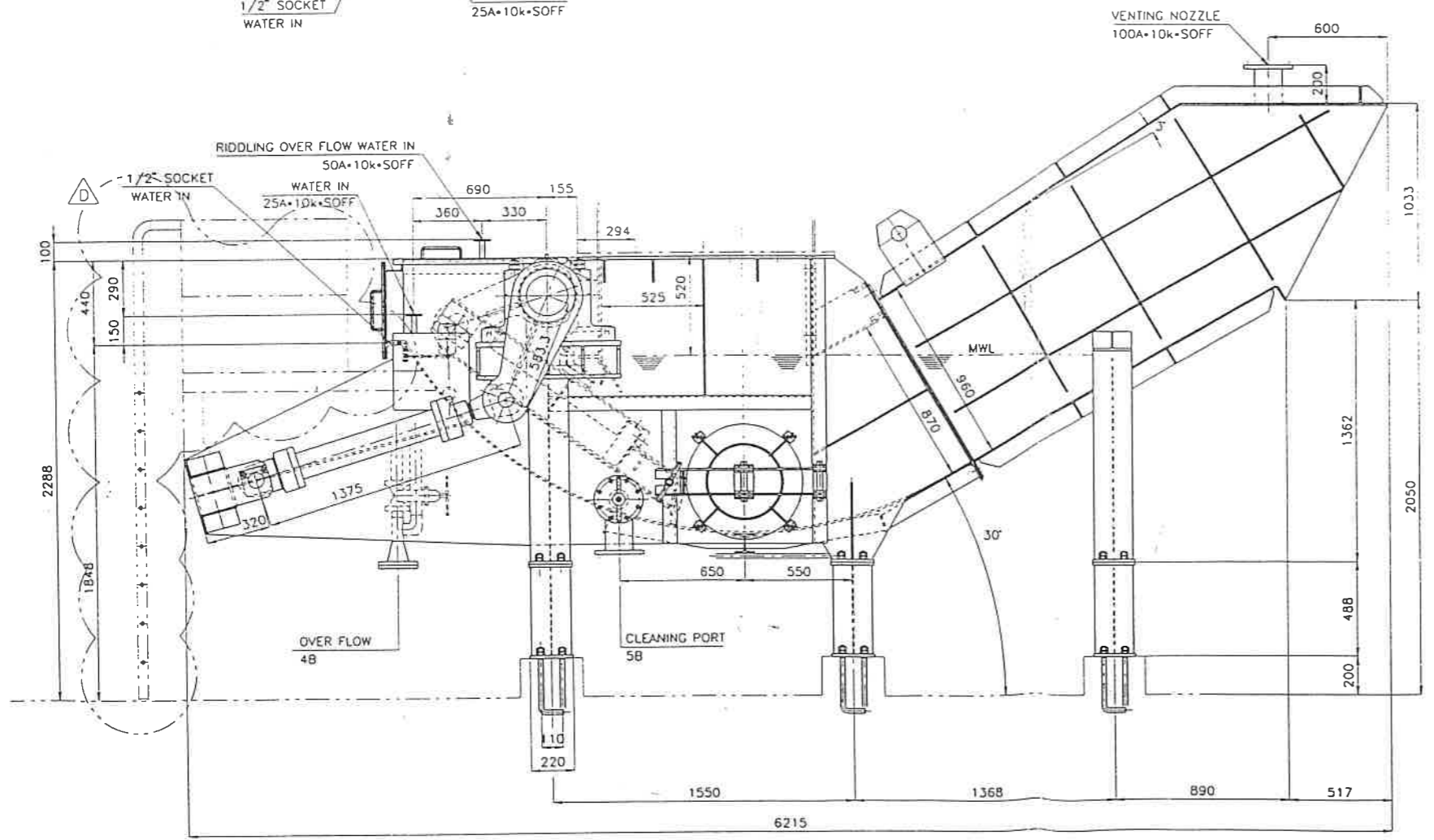


1#



505 965	2400	2420	1800	3390	145	250	7*250=1750	
505 965	2400	2420	1800	3390	145	250	7*250=1750	
505 965	2400	2420	1800	3390	145	250	7*250=1750	
505 965	2200	2220	1600	3190	120	175	7*250=1750	
505 965	2200	2220	1600	3190	120	175	7*250=1750	
505 965	2000	2020	1400	2990	195	250	5*250=1250	9803.71 Kg
505 965	2000	2020	1400	2990	195	250	5*250=1250	9803.71 Kg
505 965	1800	1820	1200	2790	120	225	5*250=1250	
505 965	1600	1620	1000	2590	120	125	5*250=1250	9332 Kg
Part.list No.	TYPE	A	B	C	D	E	F	WEIGHT

THIS MODEL



SPECIFICATION	
NAME	ASH EXTRACTOR
ITEM NO.	C-903
BULK DENSITY	0.5 ~ 1.5 T/M3
MATERIAL	BOTTOM ASH
TEMPERATURE	MAX. 500°C
MOISTURE	20 ~ 25%
SIZE	1620 * 1050

REV. NO.	DATE	DESCRIPTION	OWN	C-CD	A.E.
E	99.10.17	COMMENT 변경			
D	99.07.09	COMMENT 변경			
C	99.02.27	3'IN ISSUED			
B	99.01.19	SECOND ISSUED			
A	98.11.03	FIRST ISSUED			
PROJECT: KUNPO INCINERATION PLANT BOTTOM ASH HANDLING SYSTEM					
TAEKWANG PLANT CO., LTD. KYUNGG-DO, KOREA T. 0345-482-9680 F. 0345-482-3731					
TITLE: ASH EXTRACTOR ASSEMBLY					
DWG. NO.	ITEM NO.	DWG. START DATE	REV. NO.		
TKP-9810-BOTTOM-01		98.11.03			
SCALE	UNIT	FILE NAME			
1:15	M/M	D-D\KUNPO\DWG\EXTRACTOR\ASSY			